



THE COLLEGE OF
OPTOMETRISTS

Stage Two

Overarching case scenario 93

35 year old shop worker, drives, hobbies running, football, cricket.

Routine aftercare on soft lenses.

Monthly disposable soft lenses fitted 8 years ago; last aftercare 12 months ago. DV and NV good with spectacles and lenses.

Comfort has been good. However moved house 6 months ago and hasn't been able to get to previous practitioner, so when ran out of CL solution bought supermarket own brand. Since then lenses have felt irritable and eyes also look a little red at the end of the day.

No problems with handling.

Compliance good – washes hands before lens insertion and removal; changes CLs every month.

Uses all-in-one solution, case 1 month old, cleans case with solution daily.

Wearing time 14 hrs average, 18 hours max; 7 days per week.

Lenses are 3 weeks old and worn 10 hours today

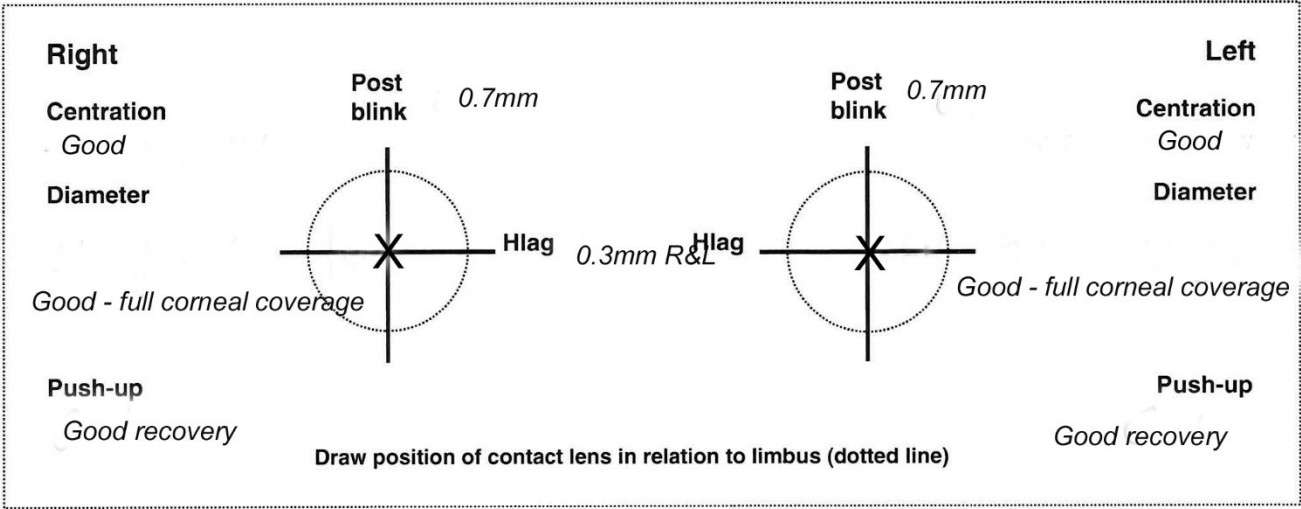
No ocular history

GH good, no meds. No allergies. Non smoker. Last eye exam 12/12 ago, specs updated then.

Spec Rx RE -2.75DS 6/5 N5
 LE -3.00/-0.25x60 6/5 N5

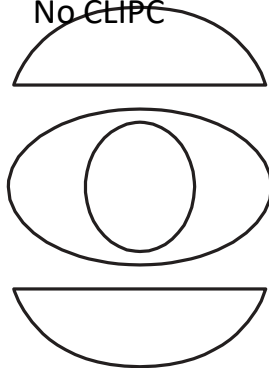
Contact lens specification:
Coopervision Avaira 8.40/14.20 RE -2.75 6/5 N5 Over refraction plano
 LE -3.00 6/5 N5 Over refraction plano

Contact lens fit



External examination

Very mild blepharitis, grade 0.5 MGD
No CLIPC

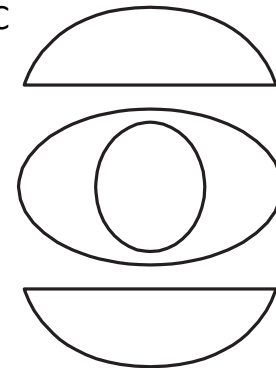


Grade 0.5 limbal hyperaemia RE, grade 2 LE

Marked punctate corneal staining R & L – see
image on next slide

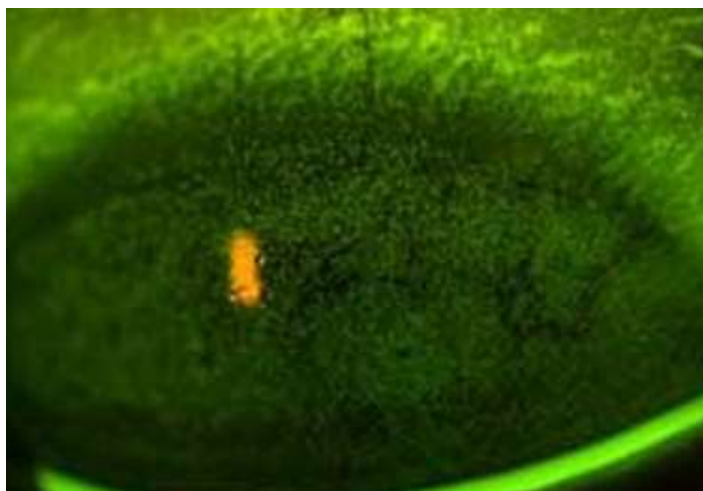
tBUT 12 seconds R&L

Very mild blepharitis, grade 0.5 MGD
No CLIPC



Corneal appearance

RE



LE

